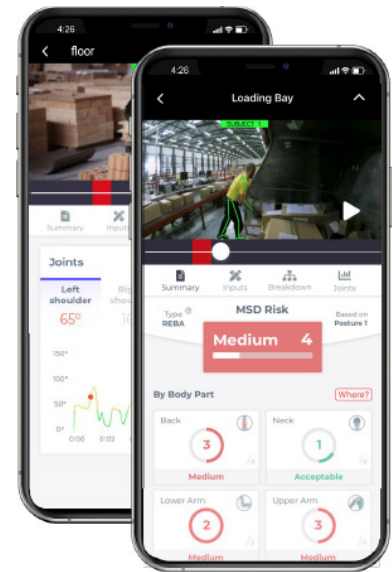


Virtual Loss Control: Ergonomics

Leveraging Mobile Technology

Using mobile technology by TuMeke, our Loss Control Consultants can now perform ergonomic evaluations remotely in real time. By utilizing TuMeke's Ergonomics Artificial Intelligence we can support our customers anywhere.

TuMeke's ergonomics artificial intelligence generates a detailed ergonomics analysis to document a policyholder's job's overall risk and breaks down the task by body part to allow our consultants to provide short-term and long-term corrective actions to help control musculoskeletal disorders (MSDs). This service connects our customers to our loss control consultants quickly while ensuring outstanding, timely service. Scheduling an ergonomics evaluation will be faster and easier with no travel required.



How Does an Ergonomics Evaluation Work?

1. The policyholder videos an operation up to four minutes long using a mobile device with guided instructions.
2. AmTrust Loss Control will email a link to a secure video transfer website to upload the video from the mobile device.
3. AmTrust Loss Control will upload the video to the TuMeke's Ergonomic AI platform and get an analysis in minutes.
4. A remote meeting will be scheduled with the policyholder to review the ergonomic analysis and discuss corrective actions to mitigate the ergonomic risk factors.
5. AmTrust Loss Control will send a summary report outlining the finding from the analysis.

Cybersecurity

Please know that cybersecurity is our top priority. The AmTrust Loss Control Consultant can't see anything on the policyholder's mobile device. Furthermore, there is no need to download an app or any software. Simply click the link provided by text/email. Please contact our Loss Control Knowledge Center at 888.486.7466 for any concerns regarding our attempts to complete an ergonomic evaluation, including confirmation that the attempt was not a hack/phishing attempt.

Ready To Get Started?

For more information, contact your AmTrust Loss Control Consultant. Additionally, you can contact AmTrust Loss Control via the following methods.

Email: AskLC@amtrustgroup.com or call: 888.486.7466

Frequently Asked Questions About Ergonomic Virtual Loss Control Visits



Q: How do I confirm the call, text or email to complete an ergonomic evaluation was from an AmTrust Loss Control Representative and not a hack or phishing attempt?

A: Please call AmTrust Loss Control Knowledge Center at 888.486.7466.

Q: What technology is needed to use this service?

A: The only thing needed is a mobile device or tablet with a camera. Tumeke's ergonomic evaluation technology is compatible with both Android and iPhone devices.

Q: Do I need to download an app?

A: There is no need to download an app or any software. Simply click the link provided by text or email. After the virtual walkthrough concludes, the text/link can be deleted.

Q: Is this process secure? How broad is your phone access?

A: Yes, this process is secure. The AmTrust Loss Control Representative cannot see anything on the device except the video sent.

Q: Is someone tech-savvy needed to upload the video?

A: Not at all. Uploading the video is straightforward and similar to adding a photo or video to a presentation or document.

Q: How long will the ergonomics evaluation take?

A: The Policyholder only needs to shoot a video from 30 seconds up to four minutes.

Q: How quick is the turnaround before I receive the results/report?

A: Results can be reviewed within 24-48 hours upon receipt of the video and depending on scheduling availability.